

ITU  
**winter triathlon**  
World Championships **Asiago**

9/10<sup>th</sup> February 2019

**ATHLETE'S GUIDE** Version 1.0 5<sup>th</sup> October 2018



## TABLE OF CONTENTS

### 1. GENERAL INFORMATION

### 2. VENUE

- 2.1 Venue
- 2.2 Facilities
- 2.3 Doping Control
- 2.4 Medical Services
  - 2.4.1. Medications
- 2.5 Insurance
- 2.6 Bike Mechanic Centre – Ski Assistance
- 2.7 Race Office

### 3. ACCOMMODATION & TRANSFERS

### 4. COMPETITION INFORMATION

- 4.1 Event Schedule
- 4.2 Competition Rules
- 4.3 ITU Uniform Rules
- 4.4 Insurance
- 4.5 Field of Play (FOP)
  - 4.5.1 Run Course
  - 4.5.2 Mountain Bike Course
  - 4.5.3 Cross Country Ski Course
  - 4.5.4 Aid Stations
- 4.6 Distances
- 4.7 Team Relay Rules
- 4.8 Weather Conditions
- 4.9 Results
- 4.10 Protests & Appeals
- 4.11 Timing chip

### 5. REGISTRATION

- 5.1 Athletes Race Packets

### 6. PRIZE MONEY

### 7. ACCREDITATION

### 8. USEFUL INFORMATIONS

## 1. GENERAL INFORMATION

### 1.1 Introduction

The purpose of the Athletes' Guide is to ensure that all Athletes and Team Managers are well informed about all procedures concerning the Event. The LOC has made every effort to ensure that the information contained in this Guide is correct and up-to-date. However, Team Managers are advised to check with the Sport Information Center for up-to-date information and any last-minute changes.

### 1.2 Event Organizer

**Event:** 2019 ITU Winter Triathlon World Championships  
**Location:** Asiago – Centro Fondo Campolongo  
**Date:** 9/10<sup>th</sup> February 2019  
**Local Organizing Committee:** Triathlon 7C asd  
**LOC Contact:** Leonardo Franco - +39 347 6898418  
**e-mail:** [triathlon7c@gmail.com](mailto:triathlon7c@gmail.com)  
**website:** [www.triathlon7c.it](http://www.triathlon7c.it)

### 1.3 Host National Federation

**Address:** Italian Triathlon Federation  
 Stadio Olimpico, Curva Sud, 00135 Roma - Italy  
**e-mail:** [areatecnica@fitri.it](mailto:areatecnica@fitri.it)

### 1.4 Key Dates

Activity	Date	Hour	Location
Athletes Registration	Friday 8 feb	17:00 – 19:30	Teatro Millepini - Asiago
Briefing: Elite - Junior	Friday 8 feb	18:00	Teatro Millepini - Asiago
Start Elite Women	Saturday 9 feb	09:30	Centro Fondo Campolongo
Start Elite Men	Saturday 9 feb	12:00	Centro Fondo Campolongo
Start Junior Men/Women	Saturday 9 feb	14:30 – 14:35	Centro Fondo Campolongo
Award Ceremony Elite - Junior	Saturday 9 feb	18:00	Teatro Millepini - Asiago
Briefing: MR – Paratriathlon – Age Group	Saturday 9 feb	18:30	Centro Fondo Campolongo
Start Mixed Relay	Sunday 10 feb	09:30	Centro Fondo Campolongo
Start Paratriathlon - Age Group	Sunday 10 feb	11:30	Centro Fondo Campolongo
Award Ceremony MR - Paratriathlon – Age Group	Sunday 10 feb	15:00	Teatro Millepini - Asiago

*“This is a prospective schedule. Hours and days may be modified due to weather conditions”*

### 1.3 Key Contacts

LOC Event Manager: Leonardo Franco	<a href="mailto:Triathlon7c@gmail.com">Triathlon7c@gmail.com</a>
LOC Race Director: Leonardo Franco	<a href="mailto:Triathlon7c@gmail.com">Triathlon7c@gmail.com</a>
LOC Race Office: Fabrizio Cunico	<a href="mailto:Triathlon7c@gmail.com">Triathlon7c@gmail.com</a>
LOC Travel Management: Roffo Angelo	<a href="mailto:info@roanaservizi.it">info@roanaservizi.it</a>

## 2. VENUE

### 2.1 Venue

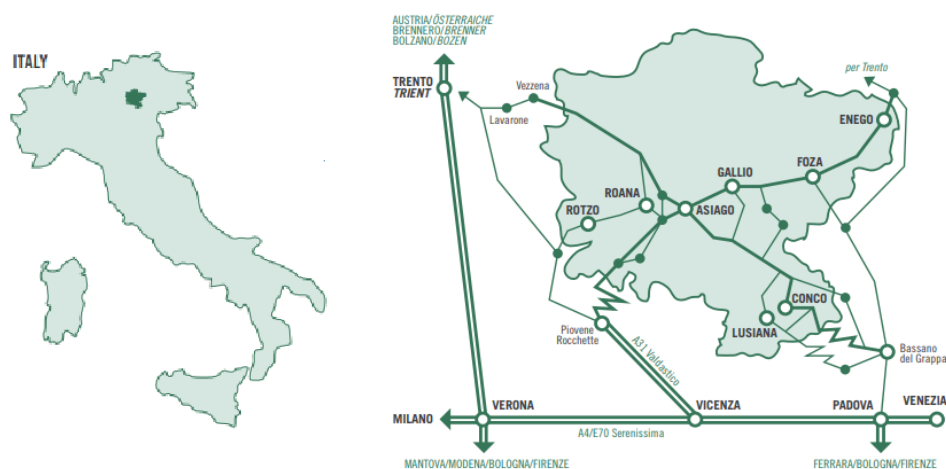
The venue is in the “Centro Fondo Campolongo” - Altopiano di Asiago



Distance from Centro Fondo Campolongo to Asiago: 17,5km

#### HOW TO REACH US

- By car:** take the motorway A4 Serenissima (Milan-Venice). When you are approaching the Vicenza Est exit, take the motorway A31 Valdastico until the Piovene Rocchette exit. From here take the Costo SP 349 and proceed where you get to Asiago. If you arrive from Austria, take the motorway A22 Brennero in the direction of Bolzano and Trento, passing through Lavarone and the Vezzena Plateau.
- By train:** there are trains leaving from Milan and from Venice going to Vicenza; otherwise, you can reach Thiene or Bassano del Grappa by train and then take the bus from there.
- By bus:** there are daily bus connections from Vicenza, Padova, Bassano del Grappa and Thiene. There are also daily connections from Milan by motorway, but only during high season; in this case a minimum number of passengers is required.
- By plane:** the nearest airports are: Venice (110 km), Treviso (130 km) and Verona (105 km). On request, a shuttle service from the airports to Asiago is available. In Asiago there is also a tourist airport with a concrete runway for light aircrafts.



**PER INFORMAZIONI**

For further information

I.A.T. ALTOPIANO DI ASIAGO - PROVINCIA DI VICENZA  
 Tel. +39 0424 462221 - +39 0424 462445 - iat.asiago@provincia.vicenza.it

Tel. +39 0424 464081 - info@asiago.to - www.asiago.to

CONSORZIO TURISTICO ASIAGO 7 COMUNI  
 Tel. +39 0424 464137 - info@asiago7comuni.to - www.asiago7comuni.to



## 2.2 Facilities

Facilities including athletes' lounge and toilets are provided for the athletes at the race venue in Centro Fondo Campolongo. At the race venue the athletes' lounge provides water, fruit, energy bars and energy drinks. Sports massages will be available to the athletes after the race at the recovery area. For bikes and cross-country skiing renting please contact: Angelo Roffo – Gestione Impianti Sportivi – [info@roanaservizi.it](mailto:info@roanaservizi.it) - +39 0424 450154

## 2.3 Doping Control

Doping Control will be performed according to the ITU/WADA regulations. Information about the Doping control venue will be updated at a later stage.

## 2.4 Medical Services

First Aid, Emergency Medical Services, n°2 ambulances will be available during the competition hours to anyone requiring medical assistance. Medical Tents will be provided on site at the recovery zone. Teams should ensure that they have appropriate medical insurance. In a medical emergency, dial 118 and ask for ambulance service. This number is free of charge from any telephone.

Further resources can be found below:

<b>HOSPITAL:</b>	Asiago Hospital - 22 km far from the race venue	Phone +39 0424 604111
<b>EMERGENCY:</b>	Police	Phone 112
	Soccorso Alpino CAI Asiago	Phone 118
	Carabinieri Via Bettinadi n. 2, Canove di Roana	Phone: +39 0424 692034
<b>PHARMACY</b>	Farmacia Dott.ssa Bottura Via Roma n. 9, Rotzo (VI)	Phone: +39 0424 691272

### 2.4.1 Medications

Athletes are advised to bring sufficient quantities of medications for personal use. It is wise to bring a letter from your personal doctor confirming your medical history and medication in case of emergency. If you have been prescribed a medication that is for restricted use in the WADA code, please ensure that you have submitted a TUE with your triathlon federation.

## 2.5 Insurance

All athletes competing in an ITU event must have personal insurance coverage guaranteed by their National Federation. This insurance will cover:

- (i) Any accident occurring before, during (i) and after any competition;
- (ii) Any sickness that an athlete could suffer during a trip to a competition or event;
- (iii) Liability caused by an athlete during the competition.

The athlete's National Federation guarantees the existence of this insurance by entering an athlete in an event.

## 2.6 Bike Mechanic Centre - Ski Assistance

Friday	february 8 <sup>th</sup>	from 08:30 to 12:30 – from 15:30 to 19:00	Aesse Garden Store, Via Patrioti n.31 Asiago
Saturday	february 9 <sup>th</sup>	from 08:30 to 12:30 – from 15:30 to 19:00	Aesse Garden Store, Via Patrioti n.31 Asiago
Saturday	february 9 <sup>th</sup>	from 8:30am to 10:30am	Race Area
Sunday	february 10 <sup>th</sup>	from 8:30am to 09:30am	Race Area

If you need help outside these hours please contact the LOC Office.

## 2.7 Race Office

The race office is located to Sala delle Maschere – Piazza Stazione n. 1 – 36012 Asiago

### 3. ACCOMODATION & TRANSFERS

**Booking contact:** Roffo Angelo  
**e-mail:** info@roanaservizi.it  
**Phone:** +39 0424 450154  
**web site** [www.roanaroller.com](http://www.roanaroller.com)

#### TRANSFER SERVICE

- Transfer Service: individual rates (without accommodation)
  - From the main Airports: 140,00Euro per single trip
  - From Vicenza railway station: 60,00Euro per single trip
  - From Hotel to race venue: 5,00Euro per single trip
  
- Hotel Reservations made through our Organisation will receive:
  - a special price for the airport transfer (round trip service)
  - free transfer service from the hotels to the race venue

#### ACCOMMODATION

Booking your stay in one of our partner Hotels will allow you to enjoy the following special FREE services:

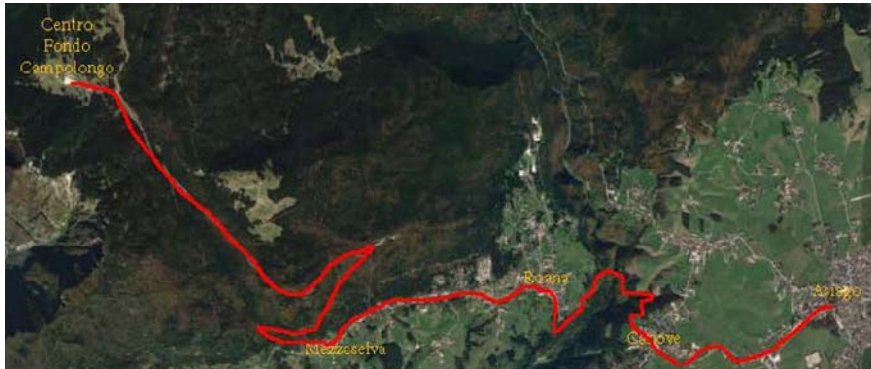
- Swimming pool in Canove: Indoor swimming pool, SPA (Turkish bath, Sauna and relax area), Equipped gym
- Ice rink (Arena) in Asiago: Ice skating (evening from 9 to 11 PM)

## 4. COMPETITION INFORMATIONS

### 4.1 Event Schedule

#### EVENT BRIEFING

<b>Friday 8/02/2019</b>	Briefing: Elite – Junior	18:00 Teatro Millepini - Asiago
<b>Saturday 9/02/2019</b>	Briefing: MR – Paratriathlon - Age Group	18:30 Teatro Millepini - Asiago



Distance from Centro Fondo Campolongo to the Briefing Location “Teatro Millepini – Asiago”: 17,5km

*“This is a prospective schedule. Hours and days may be modified due to weather conditions”*

<b>Friday 8/02/2019</b>	
TO Office Open	10:00 Centro Fondo Campolongo
Bike ad Ski Familiarization	11:00 – 15:00 Centro Fondo Campolongo
Athletes Registrations	17:00 - 19:30 Teatro Millepini - Asiago
Briefing: Elite - Junior	18:00 Teatro Millepini - Asiago
<b>Saturday 9/02/2019</b>	
TO Office Open	07:00 Centro Fondo Campolongo
Start Elite Women	09:30 Centro Fondo Campolongo
Start Elite Men	12:00 Centro Fondo Campolongo
Start Junior Men	14:30 Centro Fondo Campolongo
Start Junior Women	14:35 Centro Fondo Campolongo
Race Packet Pick Up	14:40 Centro Fondo Campolongo
Award Ceremony: Elite - Junior	18:00 – 19:30 Teatro Millepini - Asiago
Briefing: Mixed Relay – Paratriathlon - Age Group	18:30 Teatro Millepini - Asiago
<b>Sunday 10/02/2019</b>	
TO Office Open	07:00 Centro Fondo Campolongo
Transition Open Age Group	08:30 Centro Fondo Campolongo
Start Mixed Relay	09:30 Centro Fondo Campolongo
Start Paratriathlon - Age Group	11:30 Centro Fondo Campolongo
Award Ceremony: Paratriathlon – Mixed Relay - Age Group	15:00 Teatro Millepini – Asiago

#### 4.2 Competition Rules

ITU Winter Triathlon World Championships will follow the latest published Competition Rules

#### 4.3 ITU Uniform Rules

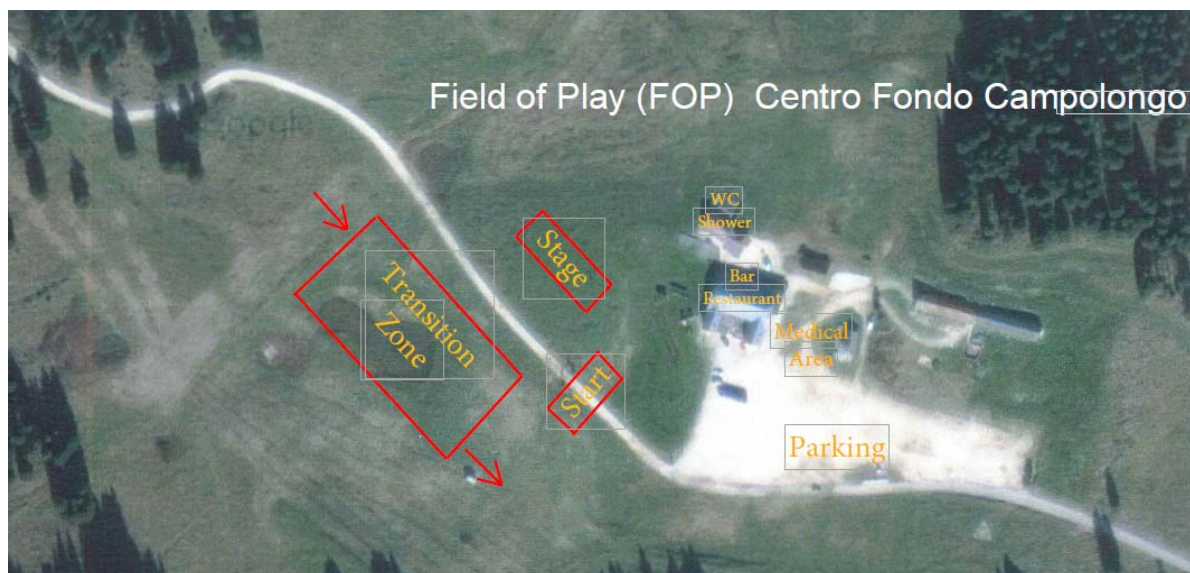
to compete in ITU events, all the athletes must comply with the ITU Uniform Rules

#### 4.4 Insurance

The LOC has insurance with the company “Reale Mutua Assicurazioni”, a standard public liability and property damage insurance policy covers the risks of insurable nature under this agreement and staging of the event.

The insurance policy has named, as insured ITU Executive Board Members, ITU Staff, ITU International Officials, the Global Partners, Global Sponsors, the ETU Executive Board and Staff, the respective LOC directors, officers, agents, volunteers, employees and contractors. All athletes and team support personal must carry their own medical insurance.

#### 4.5 Field of Play (FOP)



##### 4.5.4 Aid Station

Aid station will be located at the finish area (beyond the finish line)



#### 4.6 Distances

- Elite and Under 23 events will be held in Standard Distance
- Age Group, Junior and Paratriathlon events will be held under Sprint distance.

Category	Run	Mountain Bike	CrossCountry Ski
Elite - Under 23	7-9km	12-14km	10-12km
Junior	3-4km	5-6km	5-6km
Paratriathlon PTS2, PTS3, PTS4, PTS5	3-4km	5-6km	5-6km
Age Group	3-4km	5-6km	5-6km
Mixed Team Relay 4x	2-3km	4-5km	3-4km

*These are the prospective distances. They can be modified due to weather conditions"*

#### 4.7 Team Relay Rule

A team is composed of 4 athletes: 2 men and 2 women, who will compete in the order woman, man, woman, man. Each of them will cover a complete triathlon/duathlon/winter

#### 4.8 Weather Conditions

In Asiago the month of February is characterized by a mountain winter temperature; morning and evening -5 to -15 degrees centigrade and -5 to +5 degrees centigrade in day time.

#### 4.9 Results

Results will be uploaded live at the ITU official website [www.triathlon.org](http://www.triathlon.org)

#### 4.10 Protest & Appeals

Standard procedures will be followed according to the ITU Competition Rules

#### 4.11 Timing chip

On the race day, athletes will be given a timing chip, to be worn on the left ankle. Athletes will pick up the timing chips before the competitions, during their check-in procedure. Athletes have to return the timing band, in order to collect their bike from the Transition Area, after the race. In the event that a timing chip is not returned, a fee of €10,00 will be charged.

## 5. REGISTRATIONS

### 5.1 Athletes Race Packets

- Athletes' race packets will be distributed at the Registration Office: Teatro Millepini after the Briefing.
- Athletes must provide picture ID at race registration/packet pick-up prior to competition
- Athletes must provide copy of the bank transfer issued for the entry fee payment otherwise must to pay cash (not credit card and checks allowed):

Entry Fees	
Elite – Under 23 - Paratriathlon	€ 100,00 per athlete
Junior	€ 40,00 per athlete
Age Group	€ 100,00 per athlete
Team	€ 100,00 per team

- The race package includes bike, ski and helmet stickers, event t-shirt, wristband

## 6. PRIZE MONEY

net of all taxes

**INDIVIDUAL RACE: Euro 8.000,00**

Place	%	Elite Male	Elite Female
1.	30%	1.200 €	1.200 €
2.	25%	1000 €	1000 €
3.	20%	800 €	800 €
4.	15%	600 €	600 €
5.	10%	400 €	400 €

**MIXED RELAY: Euro 2.000,00**

Place	%	Team
1.	50%	1.000 €
2.	30%	600 €
3.	20%	400 €

Elite athletes and Teams entitled to prize-money should download the claim form from the ITU Website: in order to claim prize money from the International Triathlon Union the athlete has to give his/her full and correct address and bank details in clear and legible writing. If incorrect information is provided, a bank transfer of prize money will not be possible

## 7. ACCREDITATION

- The LOC will provide to all the organizing committee members, ITU Technical Officials, Coaches, Athletes, VIPs, media, technical staff, court personnel, volunteers, etc., the official Accreditation Card, according to the quotas indicated in the ITU Competition Rules;
- Accreditations will be distributed at the Race Office located in the Centro Fondo Campolongo before the Technical Briefing.
- Only accredited people will be allowed to access in the venue areas.
- Accreditation Cards are colour-coded and provide access to specific areas of the competition areas.
- All accredited people are requested to carry their Accreditation Cards with them at all times and to show them upon request.

## 8. USEFUL INFORMATIONS

<b>Language</b>	The official language is Italian
<b>Currency</b>	The currency of Italy is the Euro. Most major currencies may be exchanged at banks
<b>Time</b>	GMT +01:00
<b>Electricity</b>	The electric current is 220 volts
<b>Telephone</b>	If calling from abroad to Italy dial +39 To call abroad from fixed telephones in Italy must dial the prefix 00, the country code and the phone selected. Vodafone, Tim, Wind and Tre are the major mobile phone service providers in Italy.